

West Coast Collaborative Partners Meeting
San Francisco September 5, 2014

Sustainable Goods Movement Strategies



Cynthia Marvin
Chief, Transportation & Toxics Division

California Environmental Protection Agency

 **Air Resources Board**

FREIGHT TRANSPORT SYSTEM

Modes:

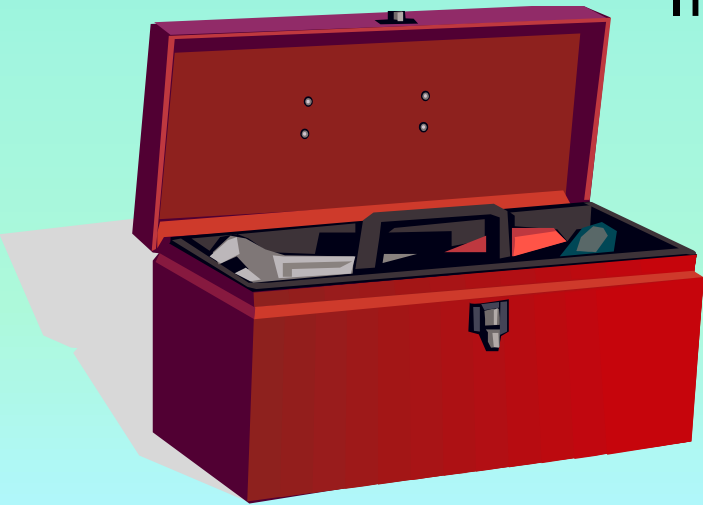


Facilities:

- Seaports
- Airports
- Rail yards & lines
- Distribution centers
- Warehouses
- High traffic roads
- Border crossings

TOOLS TO CUT EMISSIONS

- Monitoring and health risk assessments
- Plans and technology evaluations
- Regulations
 - Enforceable agreements
 - Incentives
- Port/industry initiatives
- Project mitigation
 - Land use decisions



HISTORY



CONTEXT-TECHNOLOGY



- Industries investing to replace older diesel equipment with cleaner models
- Renewable fuels & power developing

CONTEXT-EFFICIENCY 1

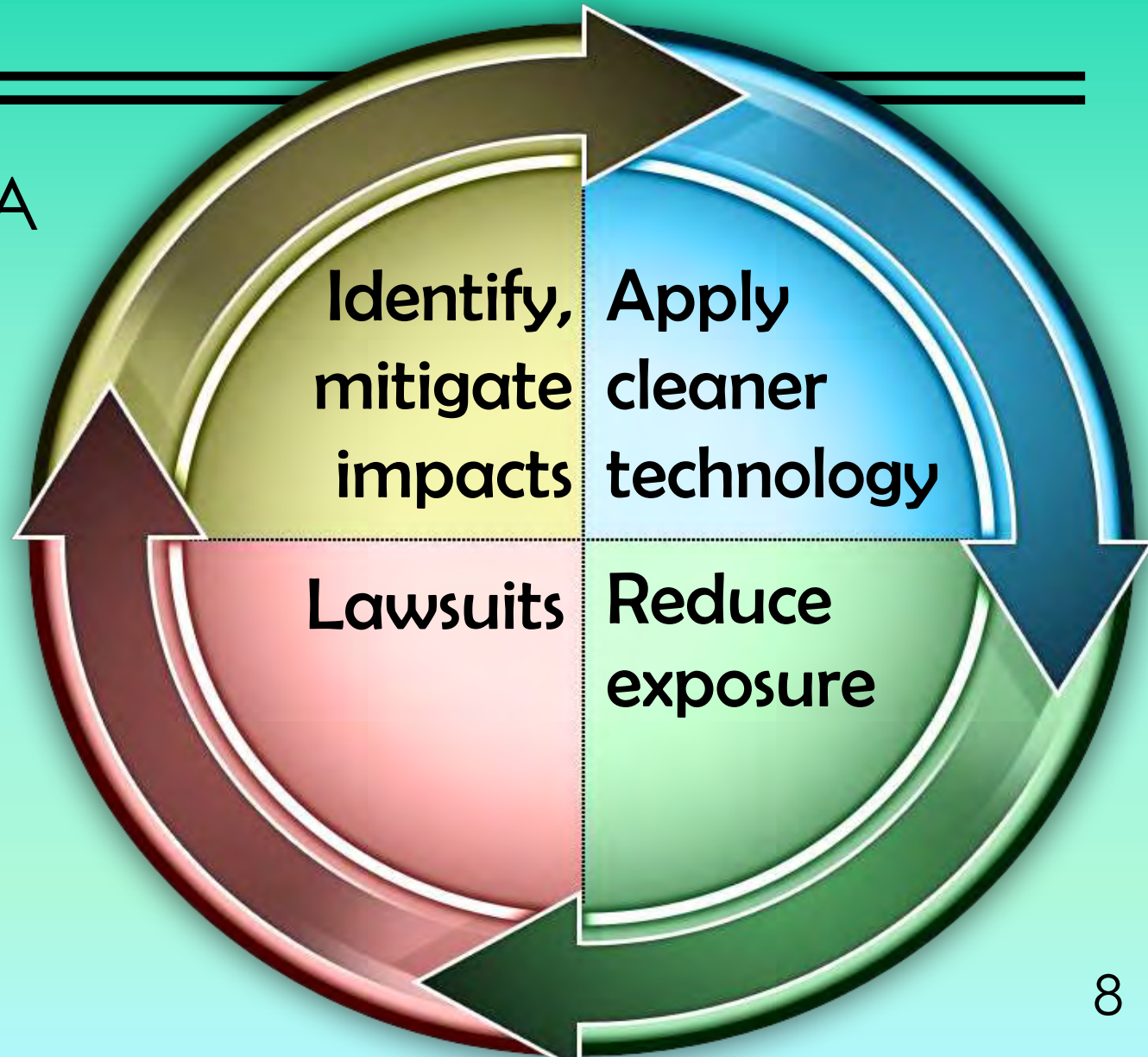


CONTEXT-EFFICIENCY 2



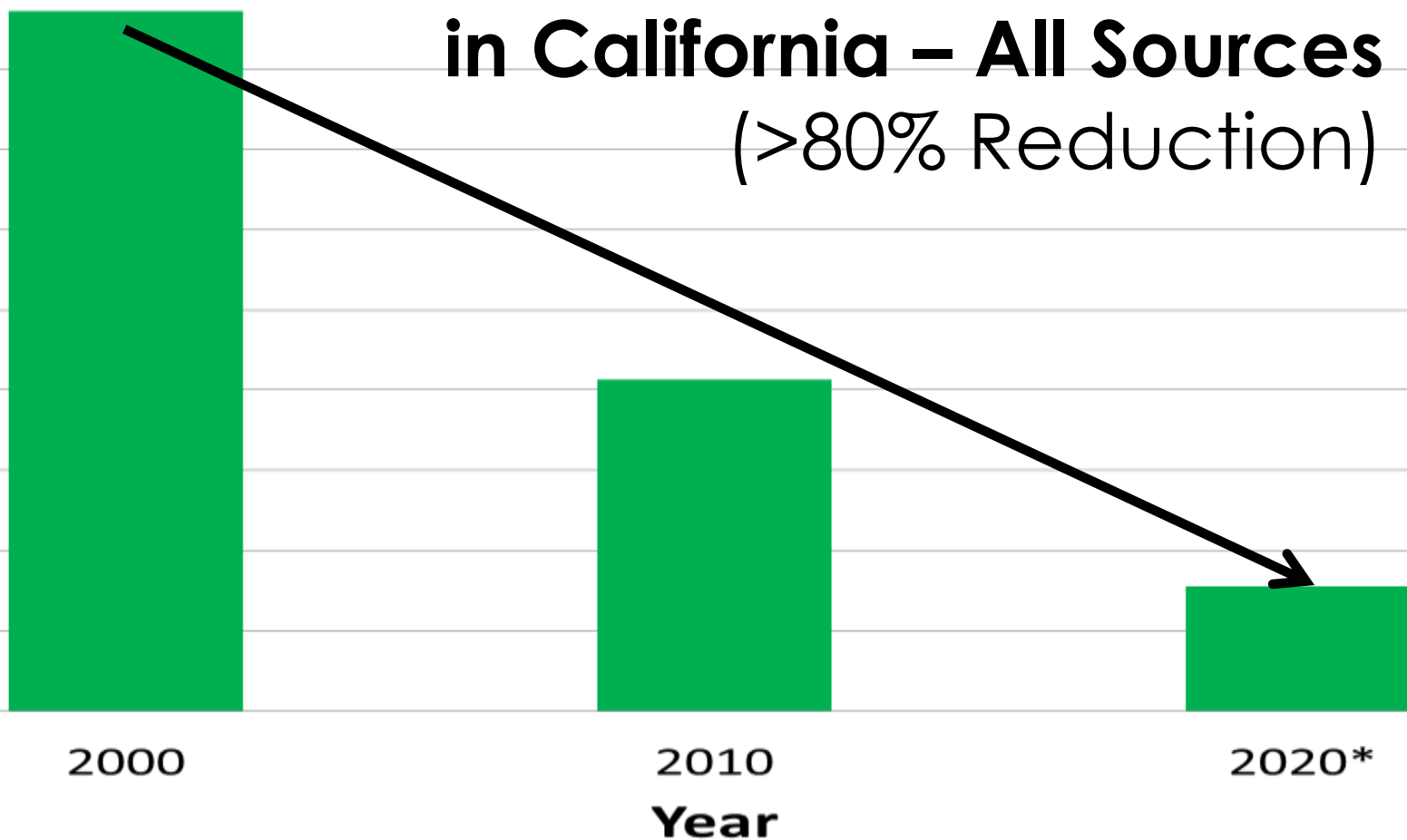
NEED TO BREAK THE CYCLE

NEPA/CEQA
analysis on
projects



PROGRESS

Health Risk from Ambient Diesel PM in California – All Sources (>80% Reduction)

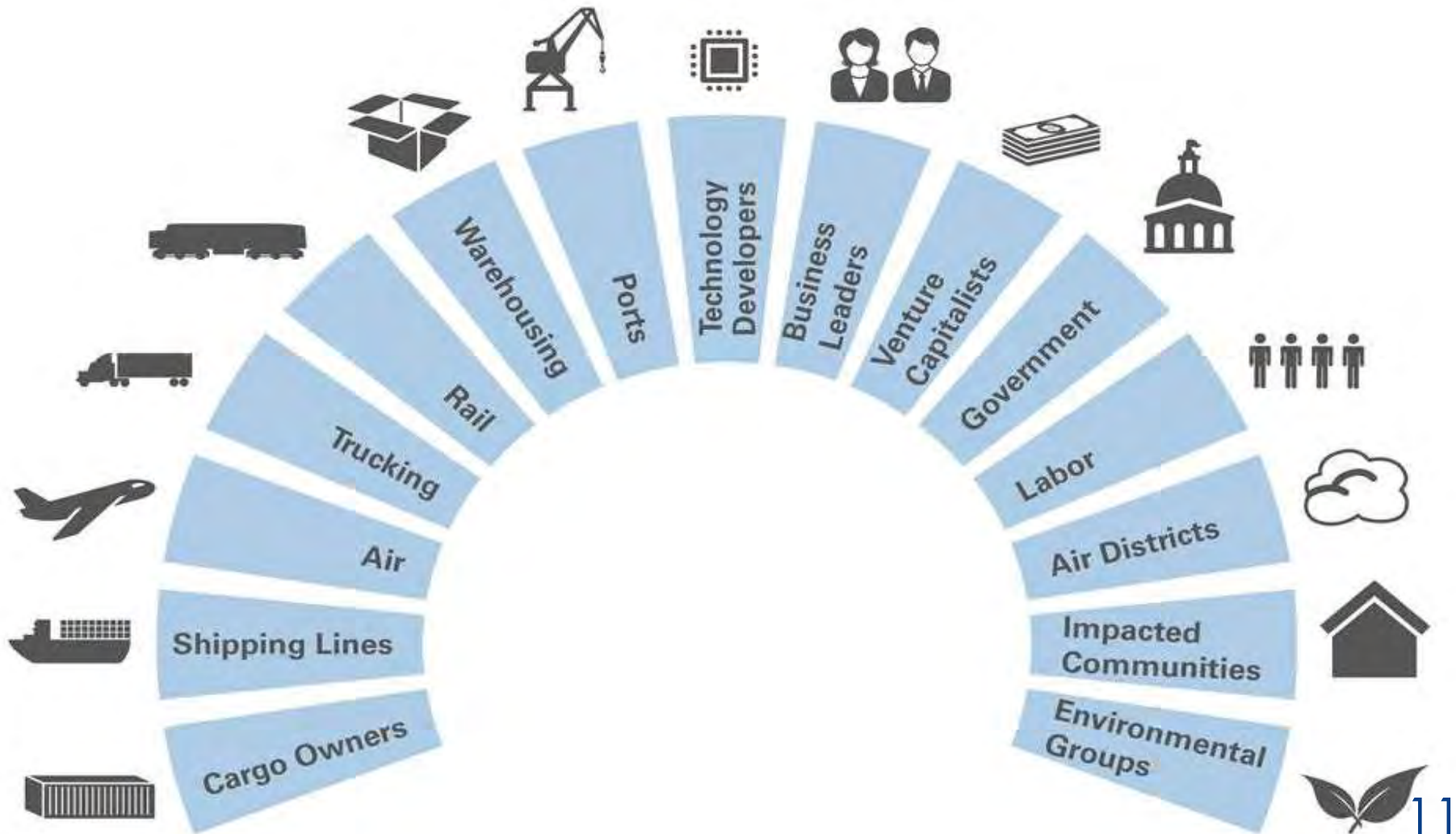


THE NEXT LEAP FORWARD



Attainment,
toxics, and
climate goals
demand **more**

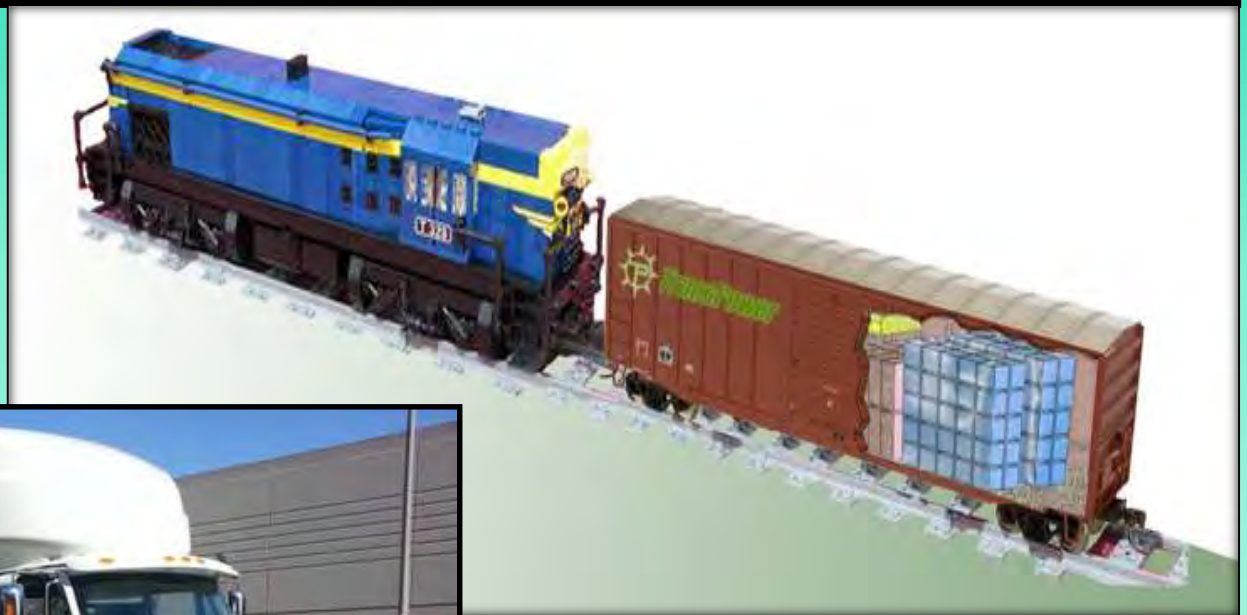
STAKEHOLDER ENGAGEMENT



SUSTAINABLE FREIGHT SYSTEM: MORE THAN GREEN

- Zero/near zero emission equipment
- Renewable fuel/energy sources
- Highly efficient system
- Improved competitiveness of California's logistics system to support jobs
- Reliable velocity and expanded capacity
- Energy security and mobility
- Clean air and healthy communities

GO ZERO, WHERE FEASIBLE





3...2...1...0

QUESTIONS

- “Zero?” How close can we get? In what applications? How fast and at what cost?
- Zero emission miles for impacted areas?
- How do we all advance those technologies?
- Should emission performance standards capture upstream emissions?
- How to improve and track efficiency?
- How to maximize economic/jobs benefits?
- Are disadvantaged communities protected?

CONCEPT CATEGORIES



Logistics and infrastructure efficiencies



Engines and equipment



Energy and fuel



Other emission reduction approaches



Land-use



Incentives (monetary and non-monetary)



Economy and jobs

SCHEDULE

Today, for five September workshops	Stakeholder concepts
November, for input at December Board meeting	Discussion draft of Strategy
Spring 2015	Proposed Strategy Analyses of environmental & economic impacts
Summer 2015	Board hearing & action on Strategy

CALIF RNNIA

SUSTAINABLE FREIGHT INITIATIVE



California Environmental Protection Agency

 **Air Resources Board**

www.arb.ca.gov/gmp/sfti/sfti
freight@arb.ca.gov